



**NISSAN**  
**MY24 JUKE**  
PRODUCT & PRICING GUIDE  
October 2024

All Product & Pricing Information within refers to the Juke MY24 Model from October 2024

# GRADE SPECIFICATION

## SV (Entry Level)



### SAFETY & SECURITY

- Driver and Passenger front, side & curtain airbags
- Rear ISO-FIX + Top Tether
- ABS + EBD + Brake Assist
- Height adjustable seat belts
- Seat belts reminder (for all seating positions)
- Vehicle Dynamic Control + Traction Control + Hill Start Assist + Active Trace Control + Active Ride Control
- Emergency Call
- Cruise Control & Speed Limiter
- Intelligent Emergency Braking with Pedestrian & Cyclist Recognition
- Intelligent Lane Intervention and Warning
- High Beam Assist
- Driver Drowsiness & Attention Alert
- Traffic Sign Recognition
- Tyre Pressure Monitoring System
- Peripheral Alarm
- Child lock + Central door lock switch + superlocking
- Idle Stop & Start system

### EXTERIOR

- Body colour electrically adjustable exterior mirrors with integrated turn signal
- Grained black plastic exterior door handles, bumper finishers & mouldings
- Driver door key lock cylinder
- Push-push type fuel lid
- Shark fin antenna
- 17" 'Sakura' flex wheel
- Automatic light with "follow me home",
- Automatic Hazard Signal (Emergency Stop signal)
- LED lamps (FR & RR & DTRL & RR Fog)

### INTERIOR

- Manual dimming interior rear-view mirror
- Driver & Passenger vanity mirrors
- Grey headliner, without assist grip handles
- Cloth Seat Trim
- Satin chrome inside door handle
- Welcome light
- Front & Rear room lights (no LED)
- Luggage room light
- Glove box with light
- Telescopic steering wheel with manual tilt
- Multifunction steering wheel
- Front monoform sporty design seat with integrated headrest
- Driver 6 ways adjustable seat: sliding/reclining/height)
- Passenger 4 ways adjustable seat: sliding/reclining
- Rear seat: 60/40 folding flat to floor, 3 separated headrests
- Center console with integrated arm rest
- Melange fabric + black PVC accent dashboard
- Cup holder Fr x2 in console
- Bottle Holder Front & Rear doors

### OPTIONS

#### COMFORT PACK - €600

- Auto A/C
- Heated & Auto folding mirrors
- Heated Front Seats

#### Rear Parking Sensors & RearView Monitor

#### METALLIC PAINT - €600

*Optional extras may impact fuel consumption, CO2 & Road Tax figures*

### TECHNOLOGY

- Manual Air Conditioning
- 12.3" touch screen display with Radio, DAB,, Bluetooth, & Voice Recognition
- 4 Speakers
- Wireless Android Auto & Apple CarPlay
- 7" Colour TFT combimeter screen
- Outside temperature thermometer
- Electric windows x4
- One Touch Driver Window
- New keyfob (remote door operation) with Engine start by key
- Electric Parking brake with auto hold function
- Paddle shift for DCT
- 2x Front USB (type A + type C) + 12V socket
- Rear view monitor (Rear camera)
- Pre-wiring for accessory towing device

### ENGINE

Engine	Transmission	CO2	FUEL CONS.
1.0L Petrol	6 Speed Manual	133	5.9L
	7 Speed DCT	138	6.1L

*Fuel Consumption & CO2s are tested under WLTP.*

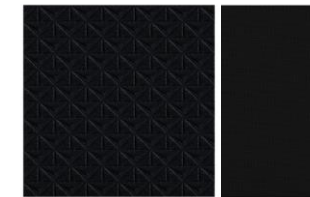
### PRICING

Variant	RRP	ROAD TAX
Manual	€30,900	€210
DCT	€32,900	€210

*\*Prices exclude dealer delivery related charges*



### INTERIOR TRIM



Black Embossed Fabric / Black Fabric

### WHEELS



17" Flex Wheels



# GRADE SPECIFICATION

## SV PREMIUM (SV+)



### SAFETY & SECURITY

- Driver and Passenger front, side & curtain airbags
- Rear ISO-FIX + Top Tether
- ABS + EBD + Brake Assist
- Height adjustable seat belts
- Seat belts reminder (for all seating positions)
- Vehicle Dynamic Control + Traction Control + Hill Start Assist + Active Trace Control + Active Ride Control
- Emergency Call
- Cruise Control & Speed Limiter
- Intelligent Emergency Braking with Pedestrian & Cyclist Recognition
- Intelligent Lane Intervention and Warning
- High Beam Assist
- Driver Drowsiness & Attention Alert
- Traffic Sign Recognition
- Tyre Pressure Monitoring System
- Peripheral Alarm
- Child lock + Central door lock switch + superlocking
- Idle Stop & Start system

### EXTERIOR

- Body colour electrically **Foldable & Heated** exterior mirrors with integrated turn signal
- Grained black plastic bumper finishers & mouldings
- **Body Coloured Door Handles**
- Driver door key lock cylinder
- Push-push type fuel lid
- Shark fin antenna
- **17" Diamond Cut Alloy wheel**
- Automatic light with "follow me home",
- Automatic Hazard Signal (Emergency Stop signal)
- LED lamps (FR & RR & DTRL & RR Fog) with manual leveliser
- **Privacy Glass**
- **Rain Sensing Wipers**
- **Front Fog Lamps**

### INTERIOR

- **Auto dimming frameless interior rear-view mirror**
- Driver & Passenger vanity mirrors
- **Black Headliner with assist grips & coat hanger**
- Cloth Seat Trim
- Satin chrome inside door handle
- Welcome light
- Front & Rear room lights (no LED)
- Luggage room light
- Glove box with light
- Telescopic steering wheel with manual tilt
- Multifunction steering wheel
- Front monoform sporty design seat with integrated headrest
- Driver 6 ways adjustable seat: sliding/reclining/height)
- Passenger 4 ways adjustable seat: sliding/reclining
- Rear seat: 60/40 folding flat to floor, 3 separated headrests
- Center console with integrated arm rest
- Melange fabric + black PVC accent dashboard
- Cup holder Fr x2 in console
- Bottle Holder Front & Rear doors
- **Luggage Board**

### OPTIONS

#### COLD PACK

- Heated Windshield
- Heated Steering Wheel
- Heated Front Seats
- Passenger Height Adjustable Seat

**2 TONE PAINT - €900**

**METALLIC PAINT - €600**

*Optional extras may impact fuel consumption, CO2 & Road Tax figures*

### TECHNOLOGY

- **Auto** Air Conditioning
- 12.3" touch screen display with Radio, DAB,, Bluetooth, & Voice Recognition
- 4 Speakers
- **Sat Nav**
- Wireless Android Auto & Apple CarPlay
- 7" Colour TFT combimeter screen
- Outside temperature thermometer
- Electric windows x4
- One Touch Driver Window & **passenger iKey with walk away lock approach unlock**
- **Engine Start/Stop Button**
- Electric Parking brake with auto hold function
- Paddle shift for DCT
- 2x Front USB (type A + type C) + 12V socket & **2 Rear USB (Type A & Type C)**
- Rear view monitor (Rear camera)
- **Front & Rear Parking Sensors**
- **Drive modes (ECO, Sport, Normal)**
- Pre-wiring for accessory towing device
- **Wireless Charger**

### ENGINE

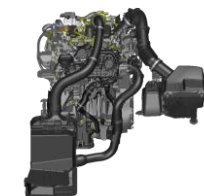
Engine	Transmission	CO2	FUEL CONS.
1.0L Petrol	6 Speed Manual	133	5.9L
	7 Speed DCT	139	6.1L

*Fuel Consumption & CO2s are tested under WLTP.*

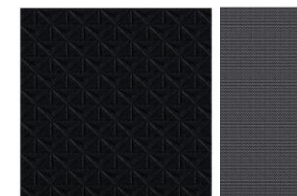
### PRICING

Variant	RRP	ROAD TAX
Manual	€31,900	€210
DCT	€33,900	€210

*\*Prices exclude dealer delivery related charges*



### INTERIOR TRIM



Cloth + Synthetic leather

### WHEELS



17" Diamond Cut Alloys



# GRADE SPECIFICATION

## N DESIGN (SV Premium +)



### SAFETY & SECURITY

- Driver and Passenger front, side & curtain airbags
- Rear ISO-FIX + Top Tether
- ABS + EBD + Brake Assist
- Height adjustable seat belts
- Seat belts reminder (for all seating positions)
- Vehicle Dynamic Control + Traction Control + Hill Start Assist + Active Trace Control + Active Ride Control
- Emergency Call
- Cruise Control & Speed Limiter
- Intelligent Emergency Braking with Pedestrian & Cyclist Recognition
- Intelligent Lane Intervention and Warning
- High Beam Assist
- Driver Drowsiness & Attention Alert
- Traffic Sign Recognition
- Tyre Pressure Monitoring System
- Peripheral Alarm
- Child lock + Central door lock switch + superlocking
- Idle Stop & Start system

### EXTERIOR

- Body colour electrically Foldable & Heated exterior mirrors with integrated turn signal
- Grained black plastic bumper finishers & mouldings
- Body Coloured Door Handles
- Driver door key lock cylinder
- Push-push type fuel lid
- Shark fin antenna
- **19" Alloy wheel**
- Automatic light with "follow me home",
- Automatic Hazard Signal (Emergency Stop signal)
- LED lamps (FR & RR & DTRL & RR Fog) with manual leveliser adjustment
- Privacy Glass
- Rain Sensing Wipers
- Front Fog Lamps
- **Satin Grey Exterior Finishers**
- **2 Tone paint w/ black, red or silver roof**
- **N-DESIGN badge on tail gate**

### INTERIOR

- Auto dimming frameless interior rear-view mirror
- Driver & Passenger vanity mirrors
- Black Headliner with assist grips & coat hanger
- Cloth Seat Trim
- Satin chrome inside door handle
- Welcome light
- Front & Rear room lights (no LED)
- Luggage room light
- Glove box with light
- Telescopic steering wheel with manual tilt
- Multifunction steering wheel
- Front monoform sporty design seat with integrated headrest
- Driver 6 ways adjustable seat: sliding/reclining/height)
- Passenger 4 ways adjustable seat: sliding/reclining
- Rear seat: 60/40 folding flat to floor, 3 separated headrests
- Center console with integrated arm rest
- Melange fabric + black PVC accent dashboard
- Cup holder Fr x2 in console
- Bottle Holder Front & Rear doors
- Luggage Board

### OPTIONS

#### COLD PACK

- Heated Windshield
- Heated Steering Wheel
- Heated Front Seats
- Passenger Height Adjustable Seat

#### MIDNIGHT INTERIOR PACK - €2,200

- Leather/Alcantara/PVC Black Seat material
- BOSE Personal with 10 Speakers

*Optional extras may impact fuel consumption, CO2 & Road Tax figures*

### TECHNOLOGY

- Auto Air Conditioning
- 12.3" touch screen display with Radio, DAB,, Bluetooth, & Voice Recognition
- 4 Speakers
- Sat Nav
- Wireless Android Auto & Apple CarPlay
- 7" Colour TFT combimeter screen
- Outside temperature thermometer
- Electric windows x4
- One Touch Driver Window & passenger iKey with walk away lock approach unlock
- Engine Start/Stop Button
- Electric Parking brake with auto hold function
- Paddle shift for DCT
- 2x Front USB (type A + type C) + 12V socket & 2 Rear USB (Type A & Type C)
- Rear view monitor (Rear camera)
- Front & Rear Parking Sensors
- Drive modes (ECO, Sport, Normal)
- Pre-wiring for accessory towing device
- Wireless Charger

### ENGINE

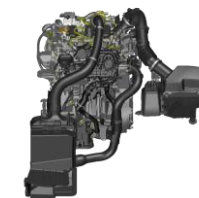
Engine	Transmission	CO2	FUEL CONS.
1.0L Petrol	6 Speed Manual	135	5.9L
	7 Speed DCT	141	6.1L

*Fuel Consumption & CO2s are tested under WLTP.*

### PRICING

Variant	RRP	ROAD TAX
Manual	€33,900	€210
DCT	€36,400	€270

*\*Prices exclude dealer delivery related charges*

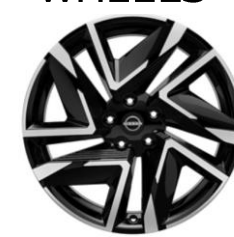


### INTERIOR TRIM



Optional "MIDNIGHT" Interior Pack  
\*See SV Premium for standard N DESIGN trim

### WHEELS



19" Alloys



# GRADE SPECIFICATION

## N SPORT (SV Premium +)



### SAFETY & SECURITY

- Driver and Passenger front, side & curtain airbags
- Rear ISO-FIX + Top Tether
- ABS + EBD + Brake Assist
- Height adjustable seat belts
- Seat belts reminder (for all seating positions)
- Vehicle Dynamic Control + Traction Control + Hill Start Assist + Active Trace Control + Active Ride Control
- Emergency Call
- Cruise Control & Speed Limiter
- Intelligent Emergency Braking with Pedestrian & Cyclist Recognition
- Intelligent Lane Intervention and Warning
- High Beam Assist
- Driver Drowsiness & Attention Alert
- Traffic Sign Recognition
- Tyre Pressure Monitoring System
- Peripheral Alarm
- Child lock + Central door lock switch + superlocking
- Idle Stop & Start system

### EXTERIOR

- Body colour electrically **Foldable & Heated** exterior mirrors with integrated turn signal
- Grained black plastic bumper finishers & mouldings
- Body Coloured Door Handles
- Driver door key lock cylinder
- Push-push type fuel lid
- Shark fin antenna
- **19" Black Akari Alloy wheel**
- Automatic light with "follow me home"
- Automatic Hazard Signal (Emergency Stop signal)
- LED lamps (FR & RR & DTRL & RR Fog) with manual leveliser adjustment
- Privacy Glass
- Rain Sensing Wipers
- Front Fog Lamps
- **Black Exterior Finishers**
- **2 Tone paint w/ black Roof**
- **N-SPORT badge on tail gate**

### INTERIOR

- Auto dimming frameless interior rear-view mirror
- Driver & Passenger vanity mirrors
- Black Headliner with assist grips & coat hanger
- Cloth Seat Trim
- Satin chrome inside door handle
- Welcome light
- Front & Rear room lights (no LED)
- Luggage room light
- Glove box with light
- Telescopic steering wheel with manual tilt
- Multifunction steering wheel
- Front monoform sporty design seat with integrated headrest
- Driver 6 ways adjustable seat: sliding/reclining/height)
- Passenger 4 ways adjustable seat: sliding/reclining
- Rear seat: 60/40 folding flat to floor, 3 separated headrests
- Center console with integrated arm rest
- Melange fabric + black PVC accent dashboard
- Cup holder Fr x2 in console
- Bottle Holder Front & Rear doors
- Luggage Board

### OPTIONS

#### COLD PACK

- Heated Windshield
- Heated Steering Wheel
- Heated Front Seats
- Passenger Height Adjustable Seat

#### ICON INTERIOR PACK - €2,200

- Yellow Alcantara & Black Technical Grained PVC Seat material with Yellow Stitching
- BOSE Personal with 10 Speakers

*Optional extras may impact fuel consumption, CO2 & Road Tax figures*

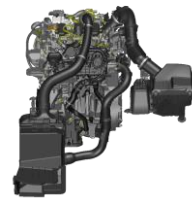
### TECHNOLOGY

- Auto Air Conditioning
- 12.3" touch screen display with Radio, DAB, Bluetooth, & Voice Recognition
- 4 Speakers
- Sat Nav
- Wireless Android Auto & Apple CarPlay
- 7" Colour TFT combimeter screen
- Outside temperature thermometer
- Electric windows x4
- One Touch Driver Window & passenger iKey with walk away lock approach unlock
- Engine Start/Stop Button
- Electric Parking brake with auto hold function
- Paddle shift for DCT
- 2x Front USB (type A + type C) + 12V socket & 2 Rear USB (Type A & Type C)
- Rear view monitor (Rear camera)
- Front & Rear Parking Sensors
- Drive modes (ECO, Sport, Normal)
- Pre-wiring for accessory towing device
- Wireless Charger

### ENGINE

Engine	Transmission	CO2	FUEL CONS.
1.0L Petrol	6 Speed Manual	135	5.9L
	7 Speed DCT	141	6.1L

*Fuel Consumption & CO2s are tested under WLTP.*



### PRICING

Variant	RRP	ROAD TAX
Manual	€34,200	€210
DCT	€36,700	€270

*\*Prices exclude dealer delivery related charges*

### INTERIOR TRIM



Optional "ICON" Interior Pack  
\*See SV Premium for standard N-SPORT trim

### WHEELS



19" Black "Akari" Alloys



# GRADE SPECIFICATION

## SVE (SV Premium +)



### SAFETY & SECURITY

- Driver and Passenger front, side & curtain airbags
- Rear ISO-FIX + Top Tether
- ABS + EBD + Brake Assist
- Height adjustable seat belts
- Seat belts reminder (for all seating positions)
- Vehicle Dynamic Control + Traction Control + Hill Start Assist + Active Trace Control + Active Ride Control
- Emergency Call
- Cruise Control & Speed Limiter
- Intelligent Emergency Braking with Pedestrian & Cyclist Recognition
- Intelligent Lane Intervention and Warning
- High Beam Assist
- Driver Drowsiness & Attention Alert
- Traffic Sign Recognition
- Tyre Pressure Monitoring System
- Peripheral Alarm
- Child lock + Central door lock switch + superlocking
- Idle Stop & Start system
- **Rear Cross Traffic Alert**
- **ProPILOT - DCT**
- **ProPILOT (ICC & LKA) - Manual**

### EXTERIOR

- Body colour electrically foldable & Heated exterior mirrors with integrated turn signal
- Grained black plastic bumper finishers & mouldings
- Body Coloured Door Handles
- Driver door key lock cylinder
- Push-push type fuel lid
- Shark fin antenna
- **19" Full Black SVE Alloy wheel**
- Automatic light with "follow me home",
- Automatic Hazard Signal (Emergency Stop signal)
- LED lamps (FR & RR & DTRL & RR Fog) with manual leveliser adjustment
- Privacy Glass
- Rain Sensing Wipers
- Front Fog Lamps

### INTERIOR

- Auto dimming frameless interior rear-view mirror
- Driver & Passenger vanity mirrors
- Black Headliner with assist grips & coat hanger
- **Synthetic Leather Trim with seat back pockets**
- Satin chrome inside door handle
- Welcome light
- Front & Rear room lights (no LED)
- Luggage room light
- Glove box with light
- Telescopic steering wheel with manual tilt
- Multifunction steering wheel
- Front monoform sporty design seat with integrated headrest
- Driver 6 ways adjustable seat: sliding/reclining/height)
- Passenger 4 ways adjustable seat: sliding/reclining
- Rear seat: 60/40 folding flat to floor, 3 separated headrests
- Center console with integrated arm rest
- Melange fabric + black PVC accent dashboard
- Cup holder Fr x2 in console
- Bottle Holder Front & Rear doors
- Luggage Board

### OPTIONS

#### COLD PACK

- Heated Windshield
- Heated Steering Wheel
- Heated Front Seats
- Passenger Height Adjustable Seat

#### BOSE PERSONAL SOUND SYSTEM - €1,100

*Optional extras may impact fuel consumption, CO2 & Road Tax figures*

### TECHNOLOGY

- Auto Air Conditioning
- 12.3" touch screen display with Radio, DAB,, Bluetooth, & Voice Recognition
- 4 Speakers
- Sat Nav
- Wireless Android Auto & Apple CarPlay
- 7" Colour TFT combimeter screen
- Outside temperature thermometer
- Electric windows x4
- One Touch Driver Window & passenger iKey with walk away lock approach unlock
- Engine Start/Stop Button
- Electric Parking brake with auto hold function
- Paddle shift for DCT
- 2x Front USB (type A + type C) + 12V socket & 2 Rear USB (Type A & Type C)
- **Around view monitor with MOD**
- Front & Rear Parking Sensors
- Drive modes (ECO, Sport, Normal)
- Pre-wiring for accessory towing device
- Wireless Charger

### ENGINE

Engine	Transmission	CO2	FUEL CONS.
1.0L Petrol	6 Speed Manual	135	5.9L
	7 Speed DCT	140	6.2L

*Fuel Consumption & CO2s are tested under WLTP.*

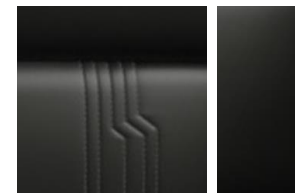


### PRICING

Variant	RRP	ROAD TAX
Manual	€34,900	€210
DCT	€36,900	€210

*\*Prices exclude dealer delivery related charges*

### INTERIOR TRIM



Black Synthetic Leather

### WHEELS



19" Black SVE Alloys



# COLOURS



**PEARL WHITE**



PEARL - €600

**FUJI SUNSET RED**



METALLIC - €600

**MAGNETIC BLUE**



METALLIC - €600

**CERAMIC GREY**



METALLIC - €600

**GUN GREY**



METALLIC - €600

**YELLOW**



METALLIC - €600

**BURGUNDY**



METALLIC - €600

**BLADE SILVER**



METALLIC - €600

**BLACK**



METALLIC - €600

**RED**



SOLID - €0

**WHITE**



SOLID - €0

**TWO TONE PAINT\* - €900**

**ROOF COLOUR**

**BLACK**



**SILVER**



**RED**



**ROOF COLOUR**

**BODY COLOURS**

PEARL WHITE  
BLADE SILVER  
GUN GREY  
BURGUNDY

FUJI SUNSET RED  
CERAMIC GREY  
YELLOW  
MAGNETIC BLUE

BLACK  
BURGUNDY  
FUJI SUNSET RED  
MAGNETIC BLUE

SILVER  
GUN GREY  
BLACK  
CERAMIC GREY

**BODY COLOURS**

\*Sharkfin Antenna is always black

# DIMENSIONS



D - OVERALL HEIGHT

1,593

MM



A - OVERALL LENGTH

4,210

MM

B - WHEELBASE

2,636

MM

C - OVERALL WIDTH

1,983

MM  
(WITH OPENED MIRRORS)



BOOT CAPACITY

422

1,477

MM

A - BOOT SPACE MAX. LENGTH

1,249

MM

B - BOOT SPACE MAX. WIDTH





Please note that every effort has been made to ensure that the contents of this publication are accurate and up-to-date at time of publication (October 2024). Nissan Ireland reserves the right to amend specification, colours, trims, options and pricing etc. without notice. This guide is not a contractual document or offer of sale. Images contained within are for illustration purposes only. Please contact your local Nissan dealer to discuss the latest product and pricing information.